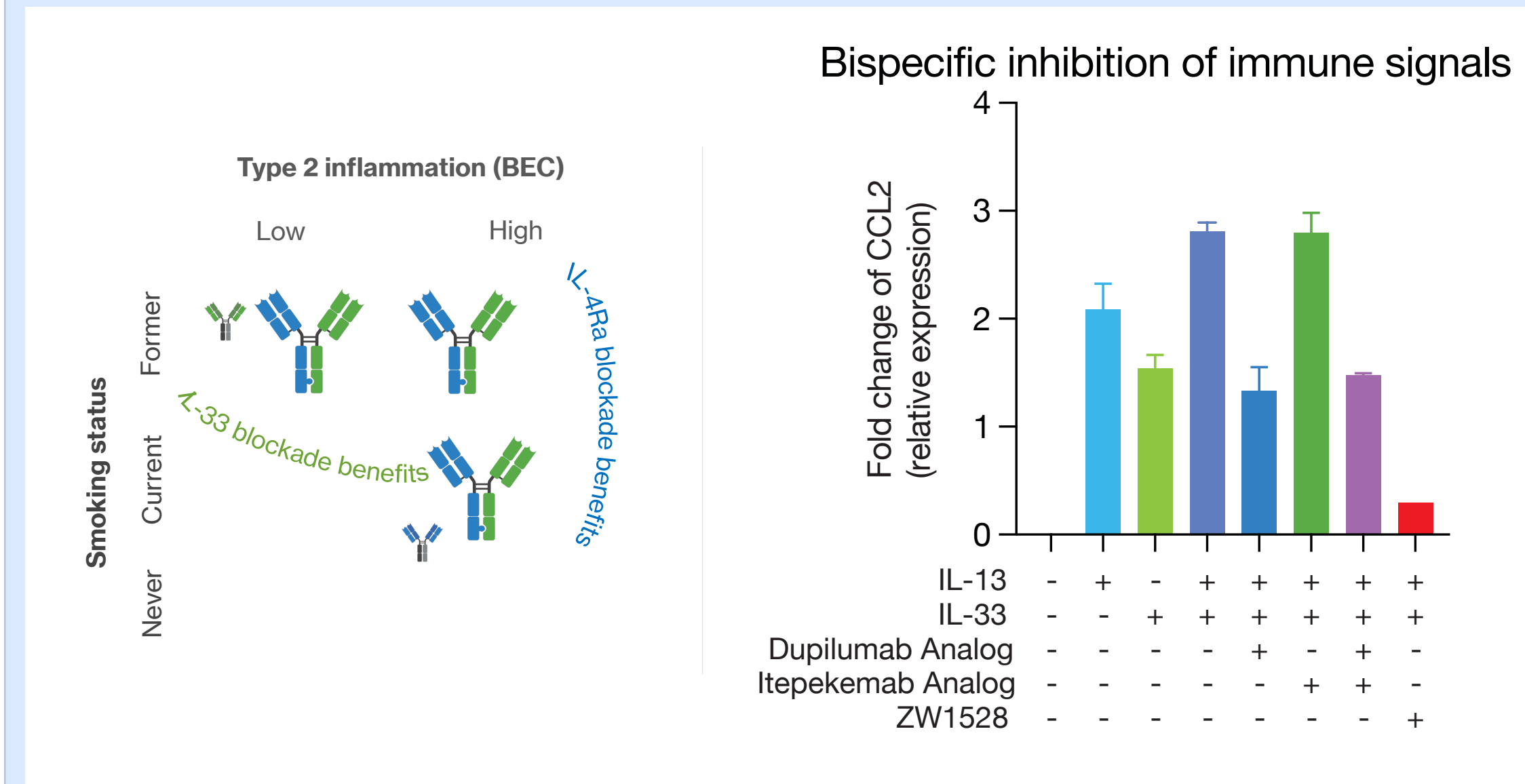
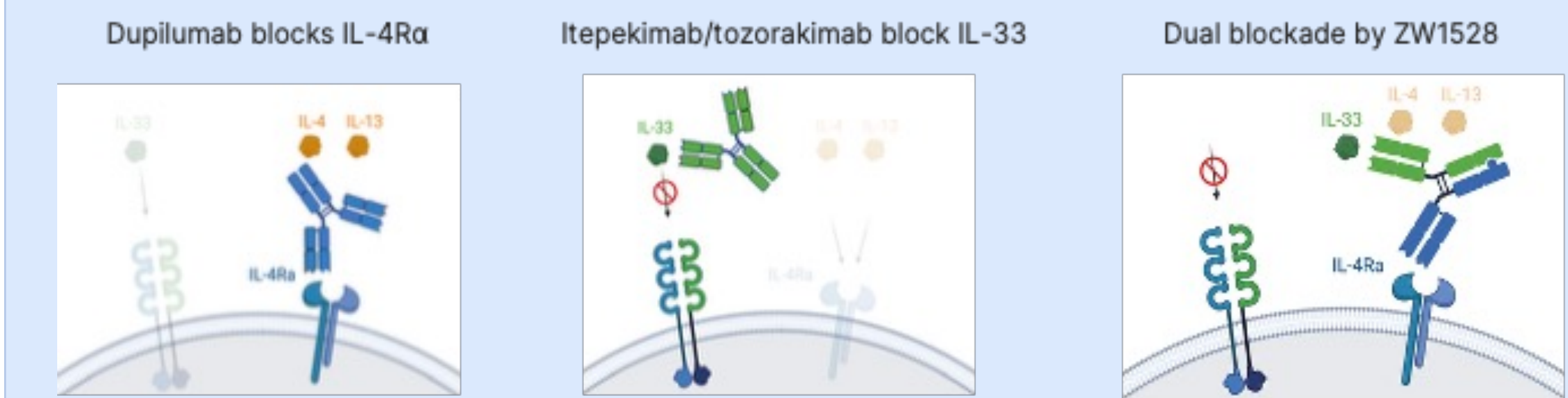


# ZW1528: IL-4R $\alpha$ x IL-33 Bispecific Antibody for Treatment of COPD

Combines clinically-validated mechanisms of action to address a broader population of COPD patients

## THE BISPECIFIC ADVANTAGE

Clinical experience indicates that COPD patient subgroups respond differentially to IL-4R $\alpha$  and IL-33 blockade. Furthermore, many patients have a mixed-type disease. As a bispecific agent targeting distinct cytokine pathways, ZW1528 may offer advantages in patient coverage, disease control and prescribing ease.



ZW1528-mediated *in vitro* blockade of cytokine-driven activation of human epithelial cells is superior to that achieved with mAbs targeting either IL-4R $\alpha$  or IL-33 alone or in combination (*above, right*). These results point to possible synergistic action of the two arms of ZW1528.

## CONTACT

David Kroeger, Ph.D., Business Development  
[david.kroeger@zymeworks.com](mailto:david.kroeger@zymeworks.com)



## ABOUT ZYMEWORKS

R&D HQ Vancouver, Canada  
 NASDAQ: ZYME

Zymeworks is a royalty-driven biotechnology company managing a portfolio of healthcare assets and developing a diverse pipeline of novel, multifunctional biotherapeutics. Our pipeline of product candidates is based on our extensive experience and proven capabilities in both antibody-drug conjugates and multispecific antibody therapeutics.

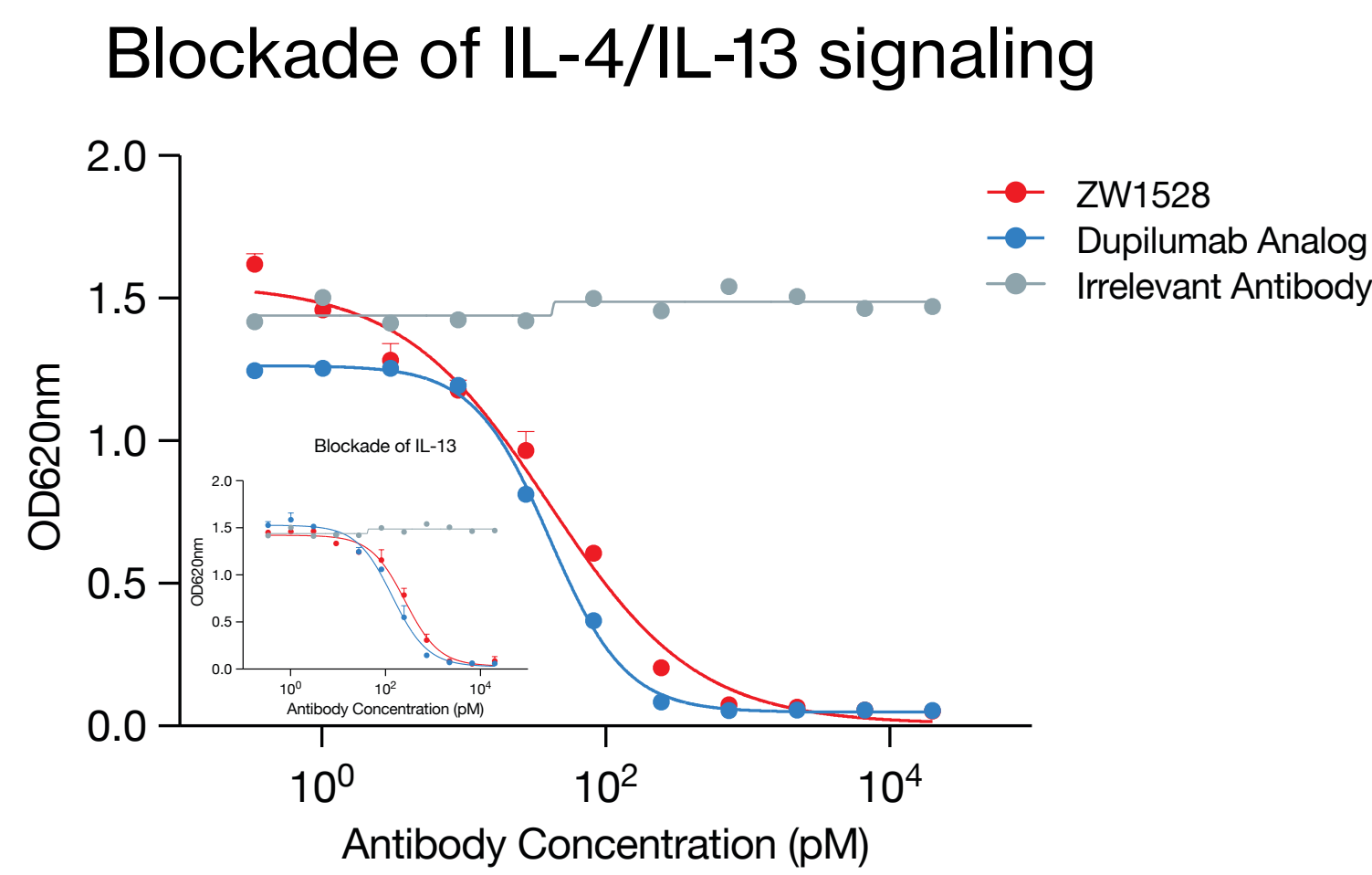
## ABOUT ZW1528

Zymeworks' first program in AIID, is a novel IL-4R $\alpha$  x IL-33 bispecific molecule designed to address respiratory inflammation such as mixed-type chronic obstructive pulmonary disease (COPD). By blocking three cytokines (IL-4, IL-13, and IL-33) in a single biologic, ZW1528 offers a unique approach to inhibit clinically validated pathways. The bispecific antibody is designed to provide complete, prolonged IL-4R $\alpha$  blockade with simultaneous blockade of IL-33.

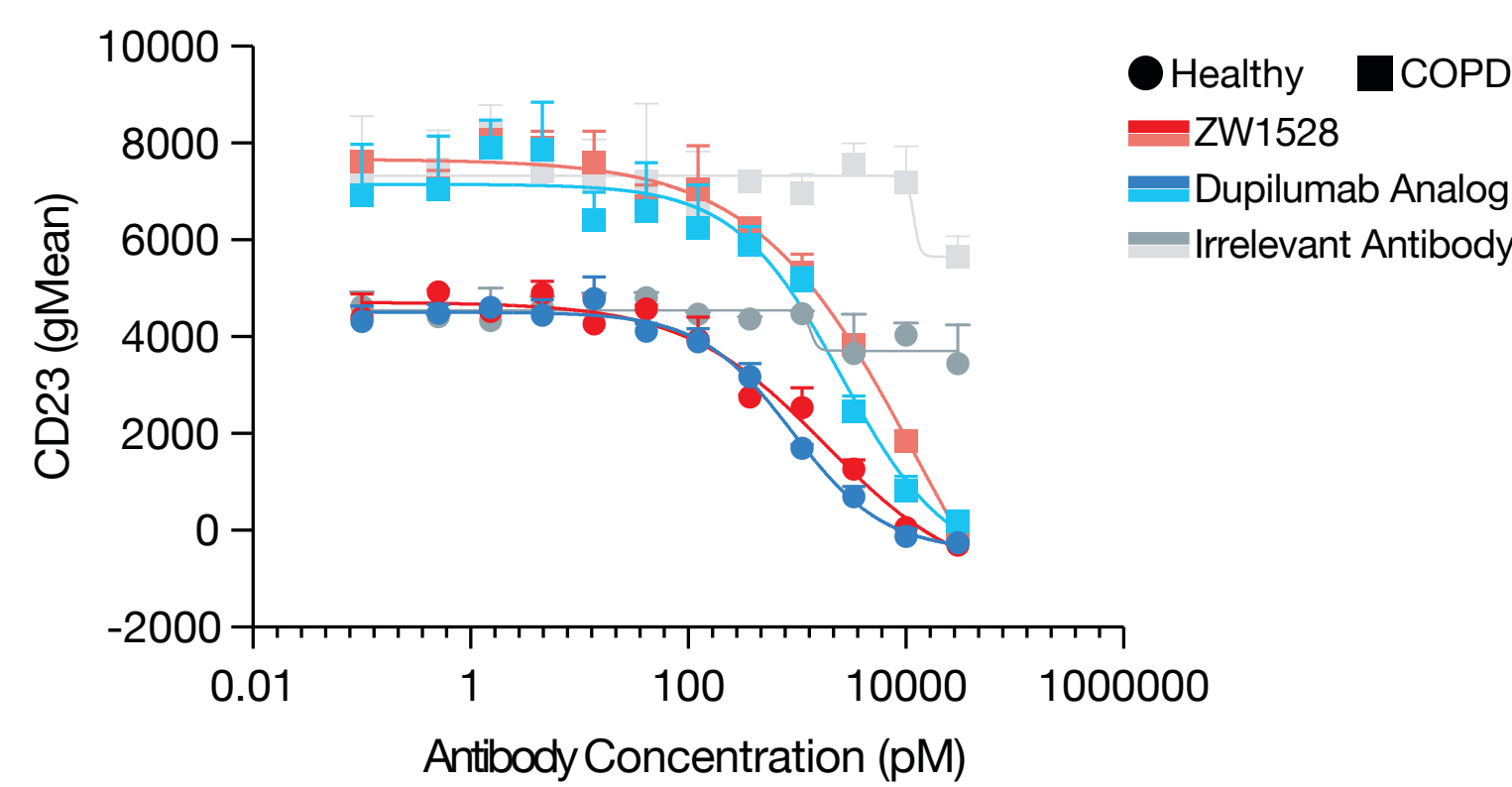
## MANAGEMENT TEAM

Ken Galbraith, CEO  
 Adam Schayowitz, Ph.D. MBA, EVP Head R&D  
 Scott Platshon, EVP, CBO  
 Paul Moore, Ph.D., CSO  
 Sabeen Mekan, MD, CMO

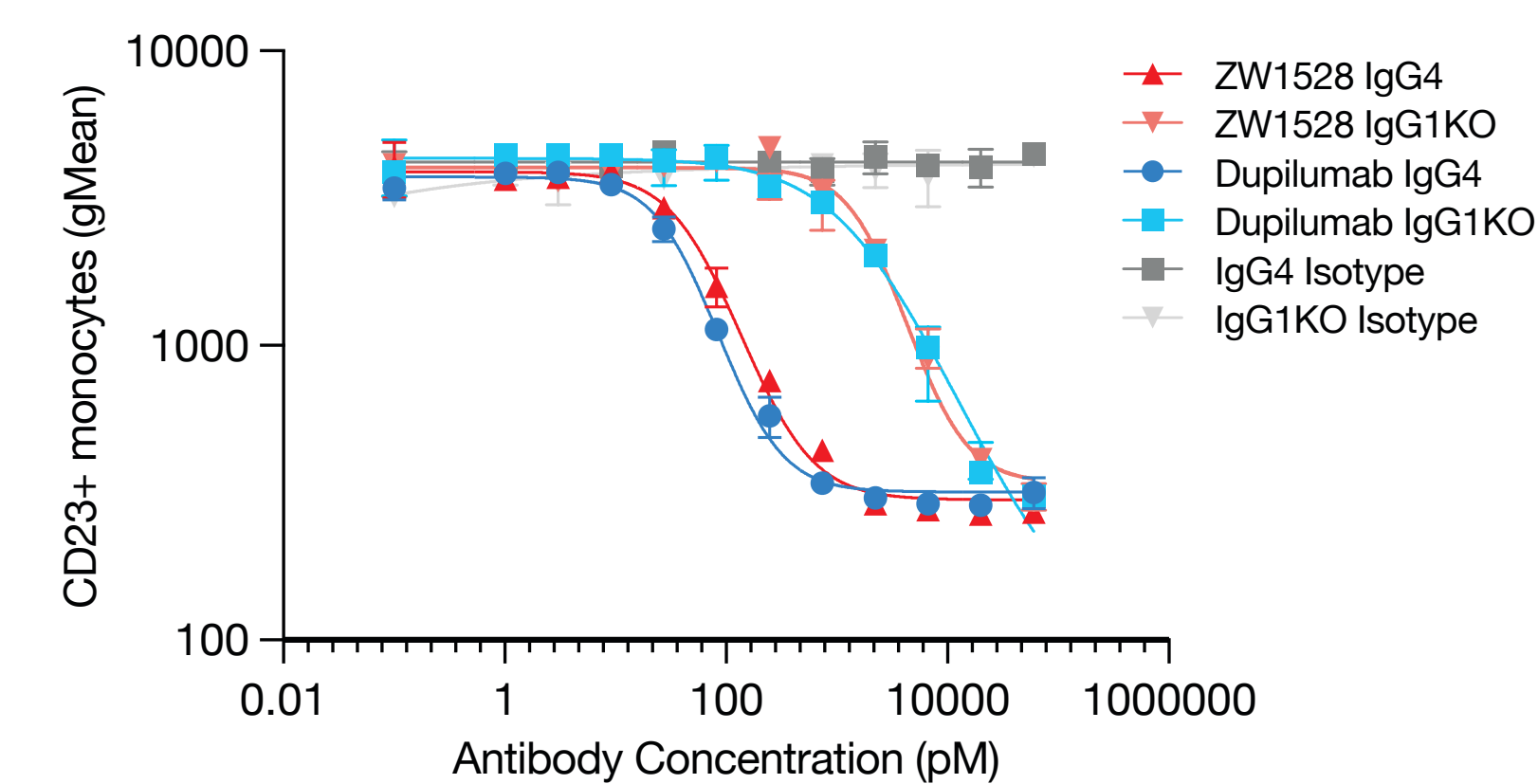
## Anti-IL-4R $\alpha$ - blocks IL-4/13



## Inhibition of IgE receptor upregulation by IL-4 in COPD patient samples

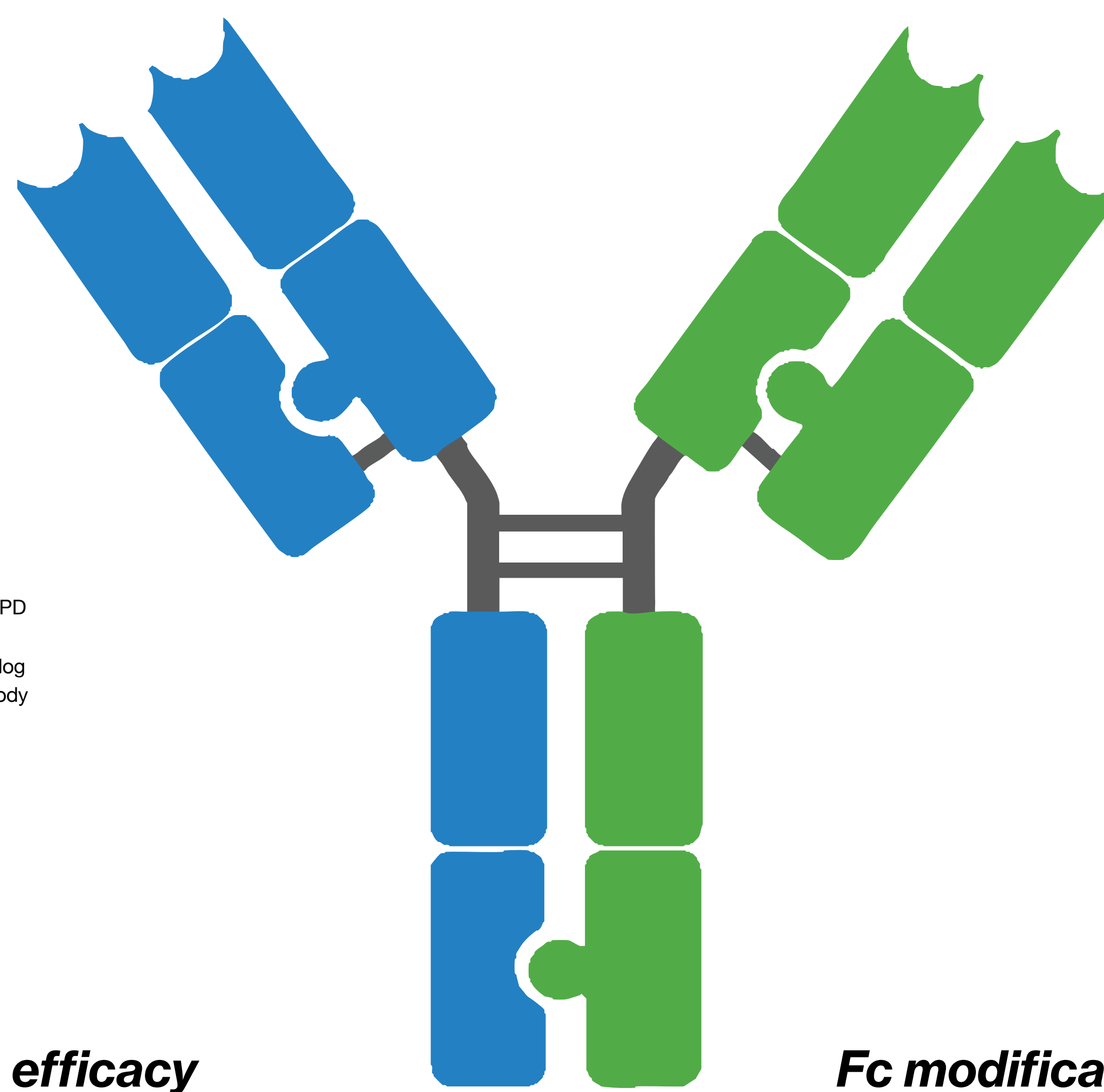


## Enhanced Inhibition of IgE receptor



## IgG4 Fc - improves efficacy

# ZW1528

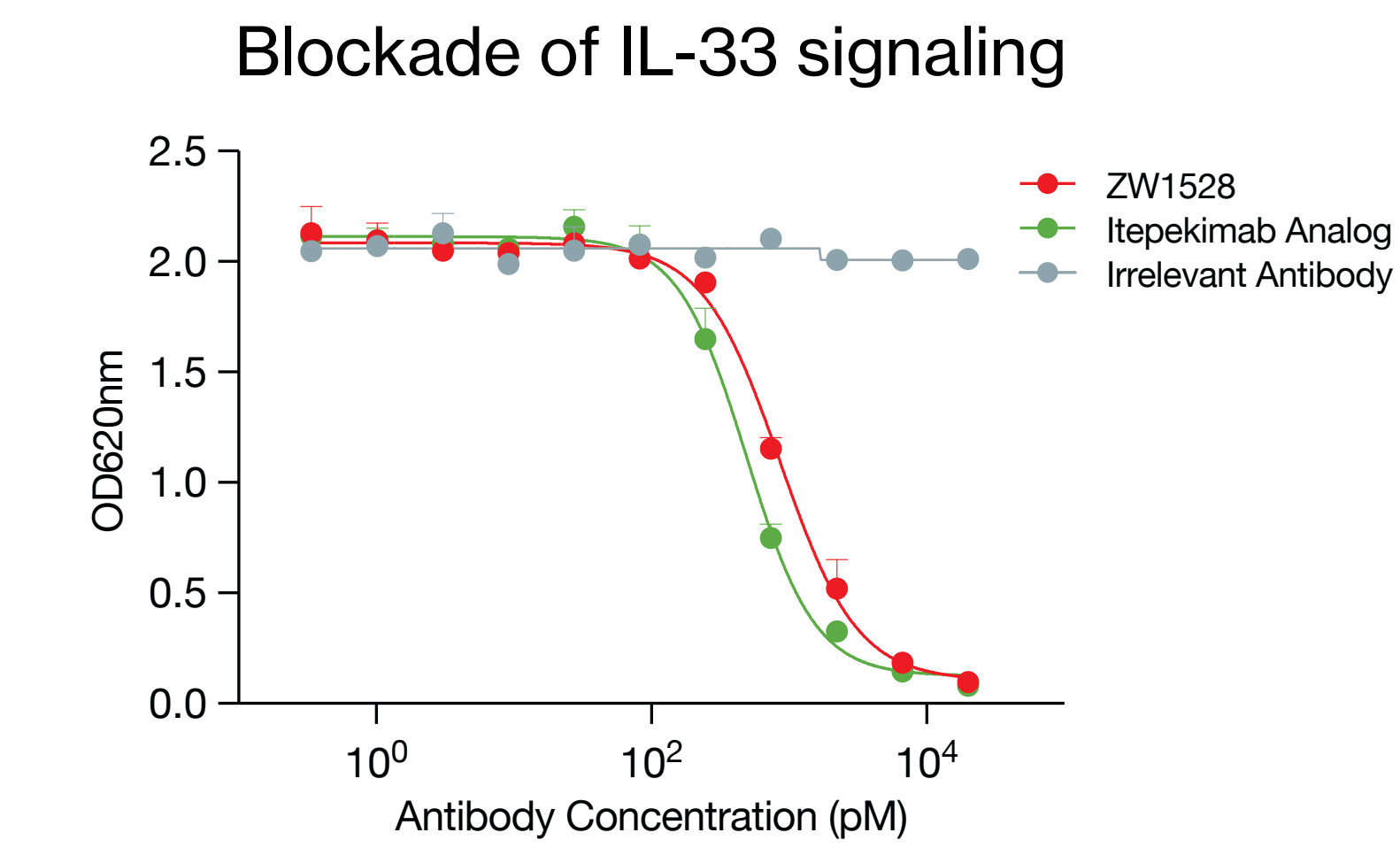


## Fc modifications - extended PK

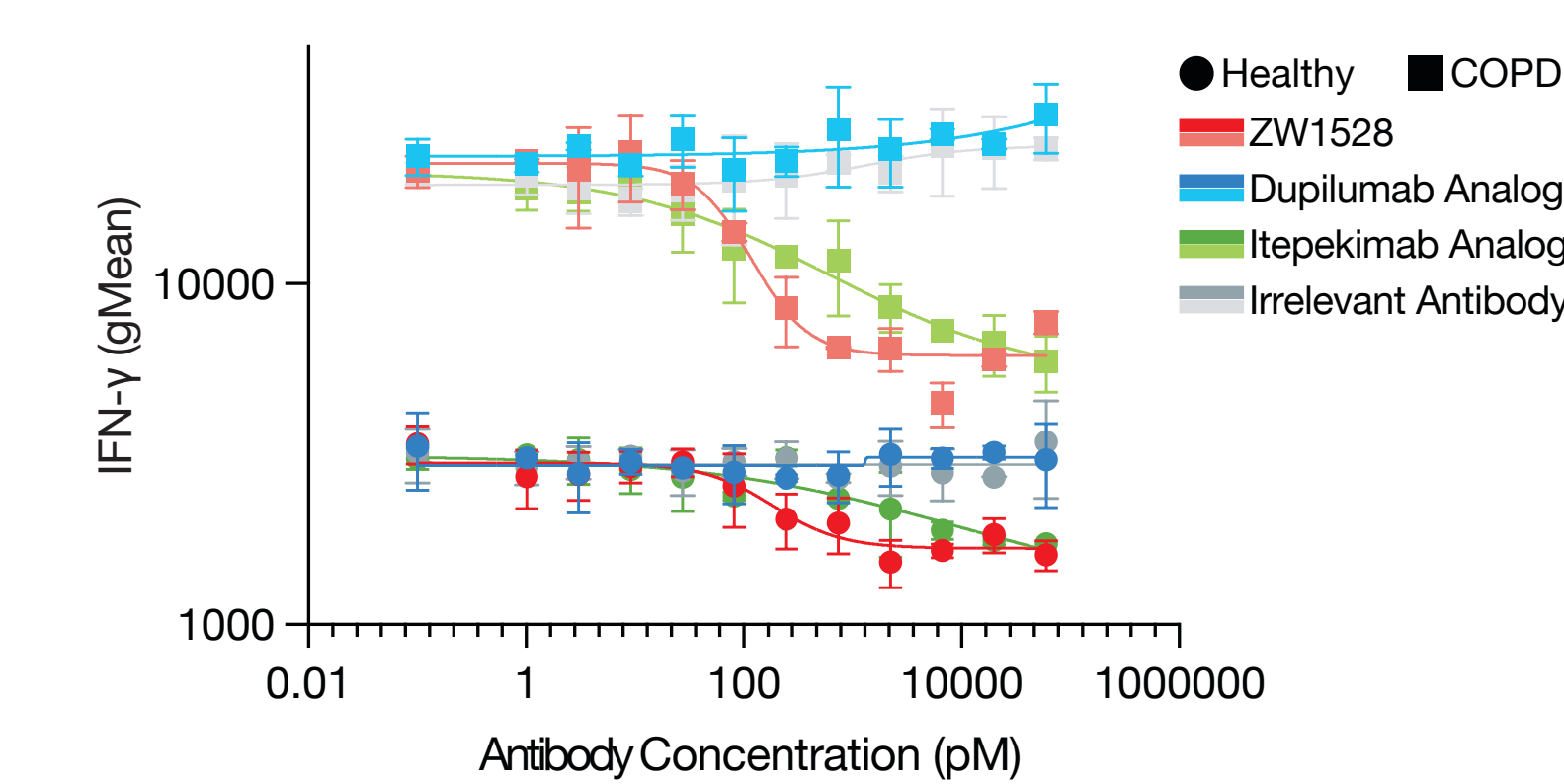
## Azymetric™ Fc and Fab

Native IgG geometry  
 Efficient pairing (high purity)  
 High titers from CHO  
 Thermostable  
 Limited self-interaction  
 Formulable to >150mg/mL for SC

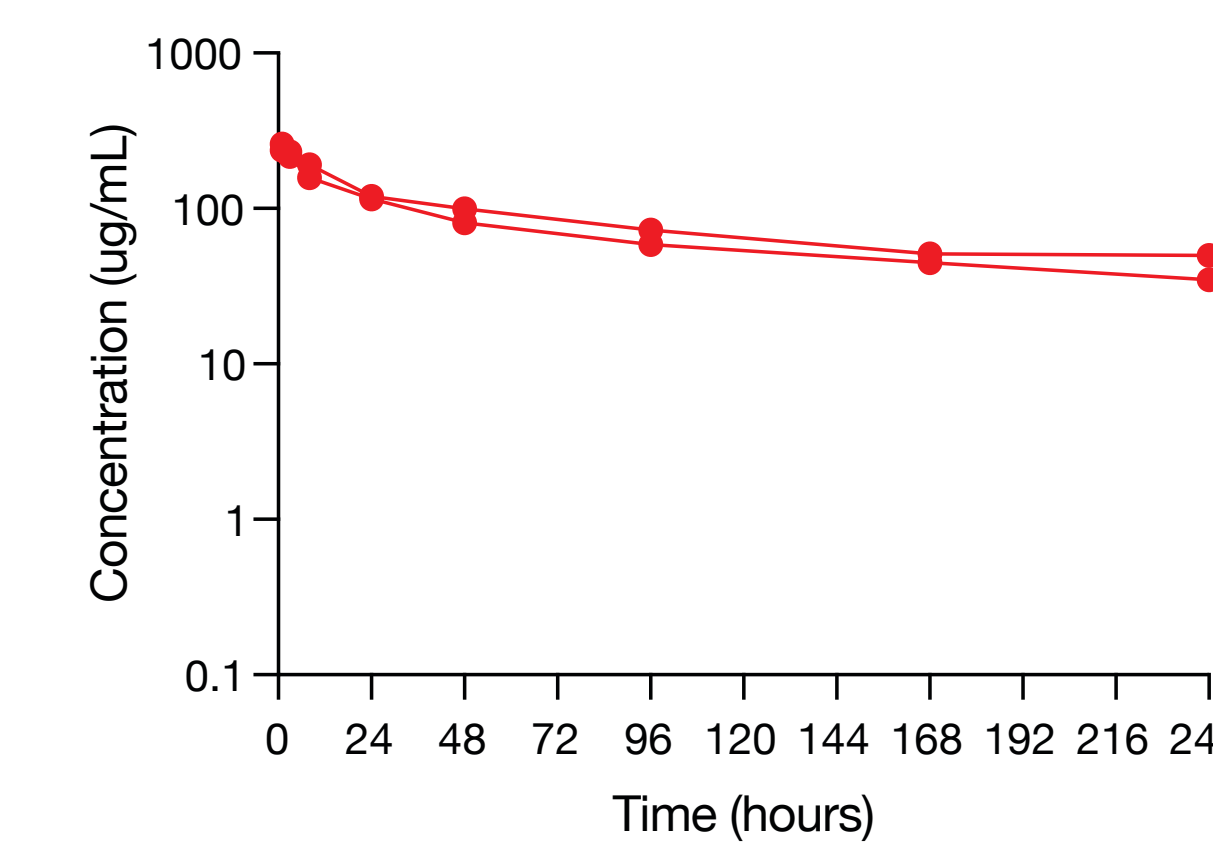
## Anti-IL-33 - blocks IL-33



## Inhibition of NK cell activation by IL12/IL33 in COPD patient samples



## YTE Fc mutations supports prolonged PK in NHP



IND and initiation of Ph1 2027 (seeking partnership)